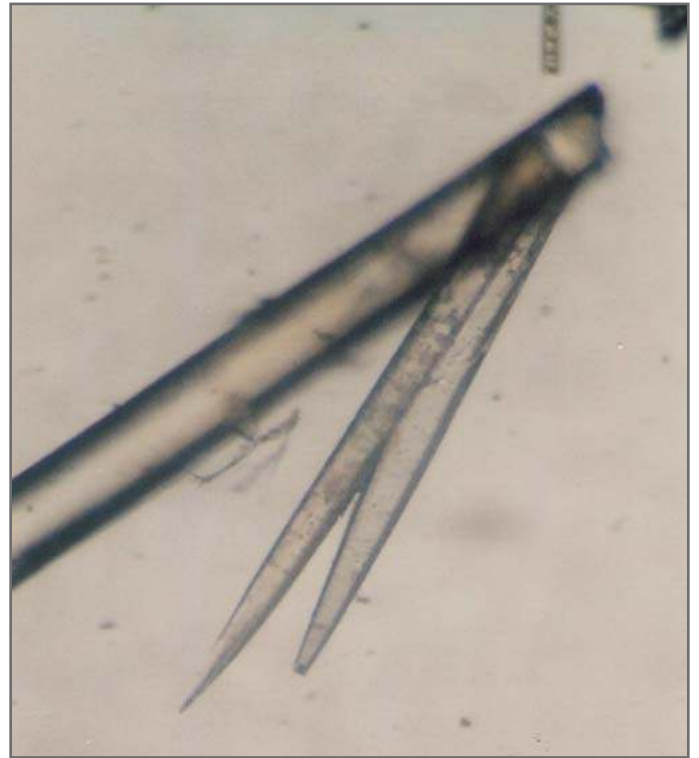
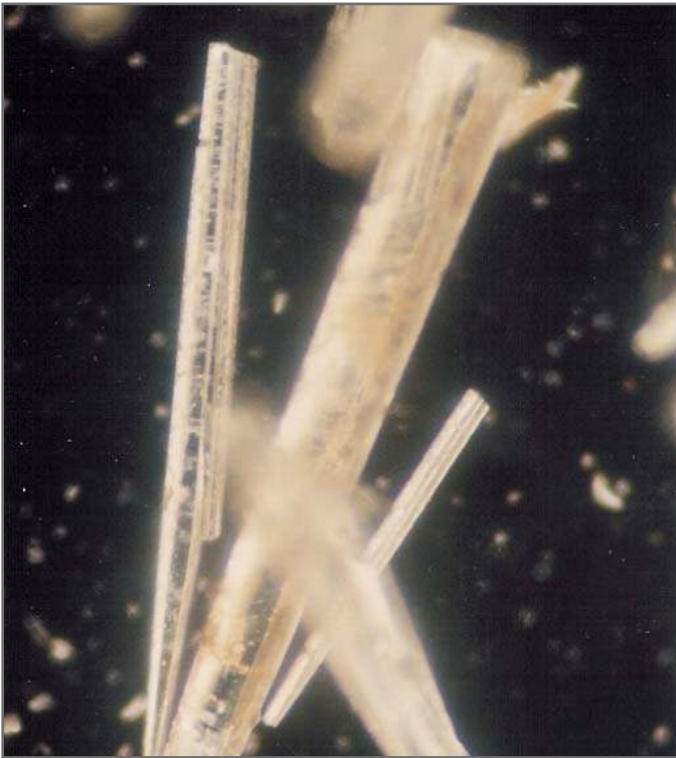
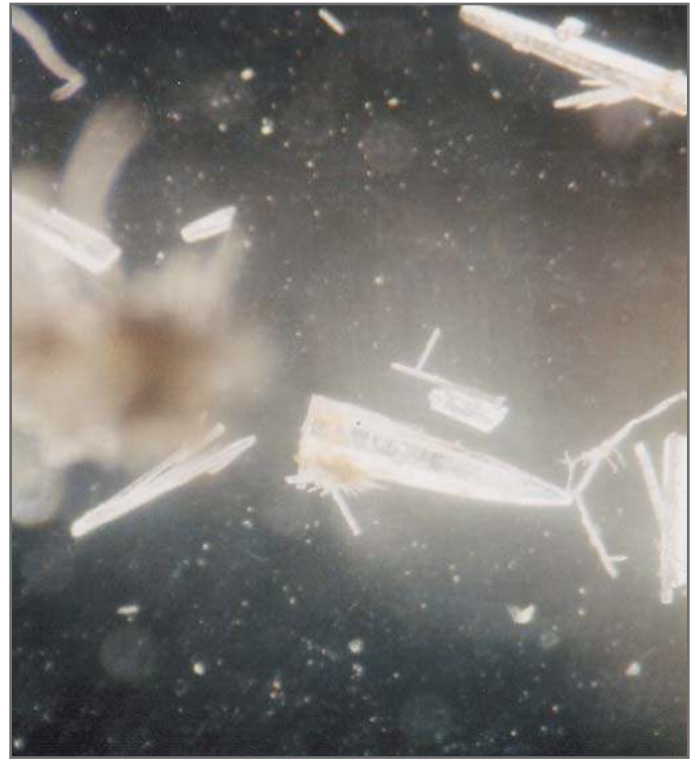


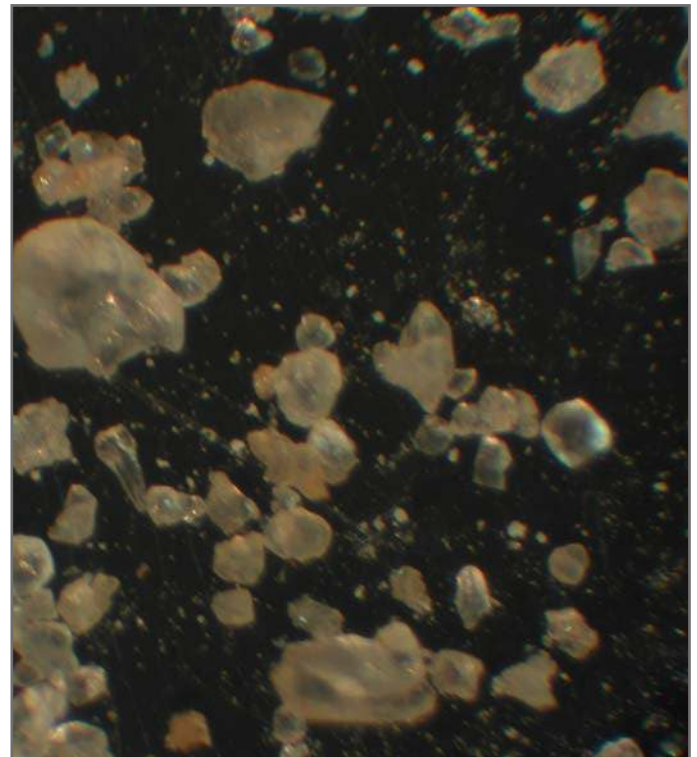
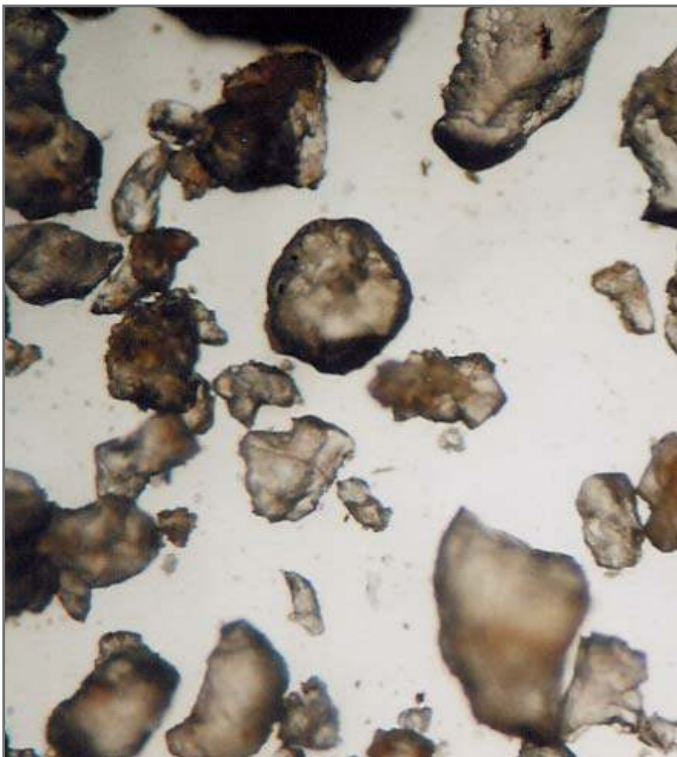
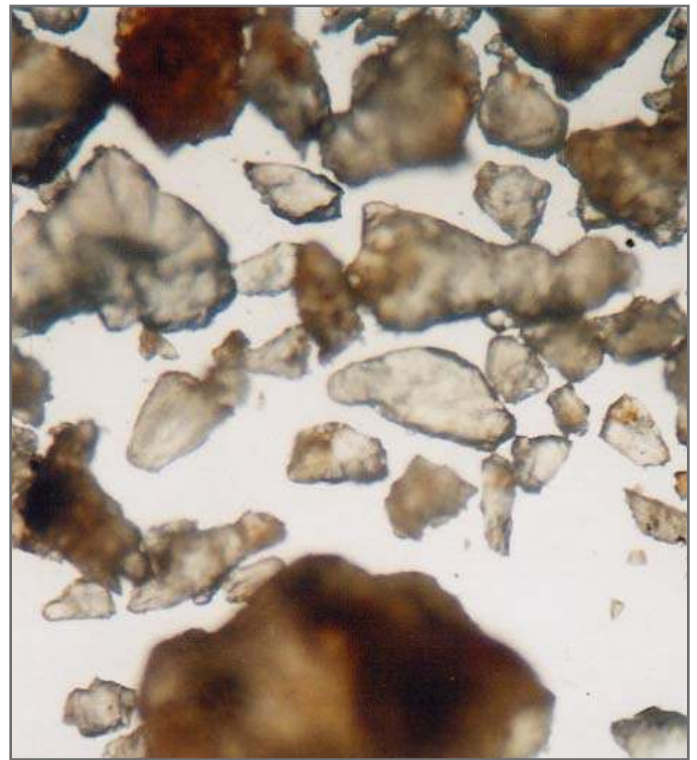
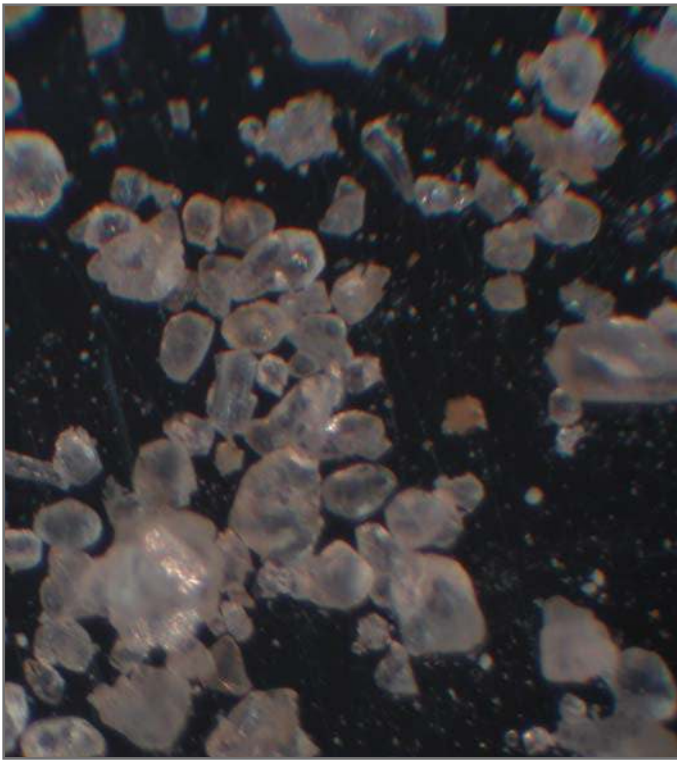
# Microscopic examinations of limescale without water purification



These sharp calcite crystals are formed when normal tap water is heated, and tend to result in massive limescale deposits.

In the human organism as well, similar calcite crystals can lead to increased hardening of the arteries in conjunction with cholesterol.

# Microscopic examinations of limescale after UMH water purification



The limescale crystals depicted here have been transformed into aragonite in the UMH water purification process. Thanks to the rounded shape of the crystals, there is no tendency for scale to adhere to surfaces. The sand-like residues are flushed out and existing limescale is gradually broken down.

A similar purifying effect can be seen in the human organism.